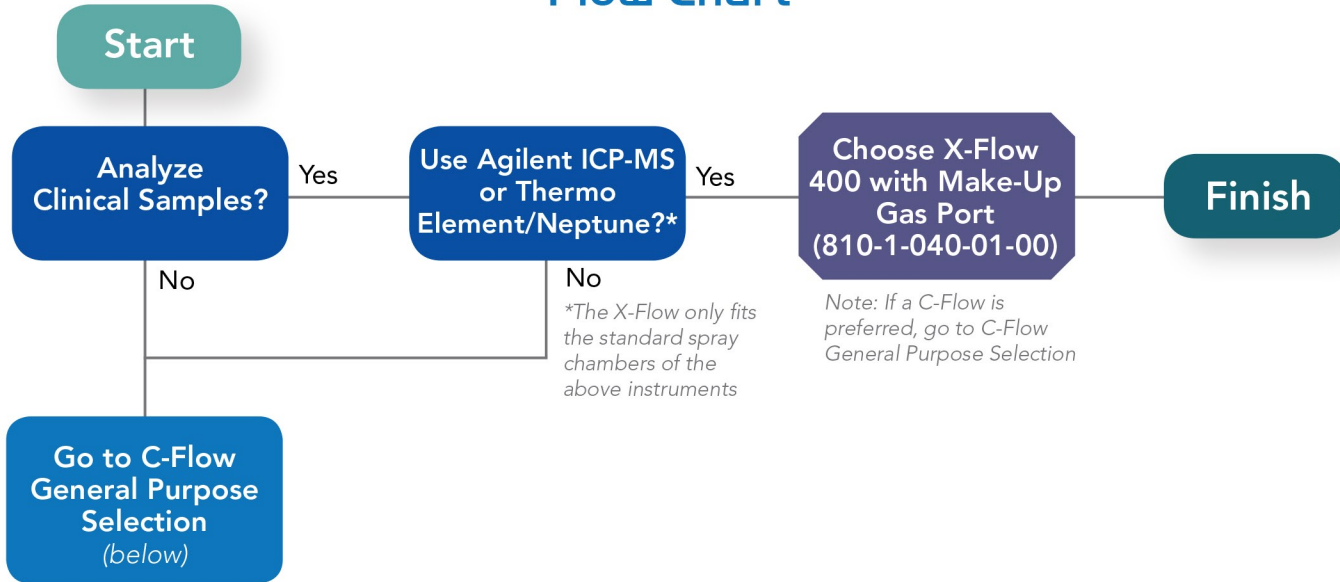


# Nebulizer Selection

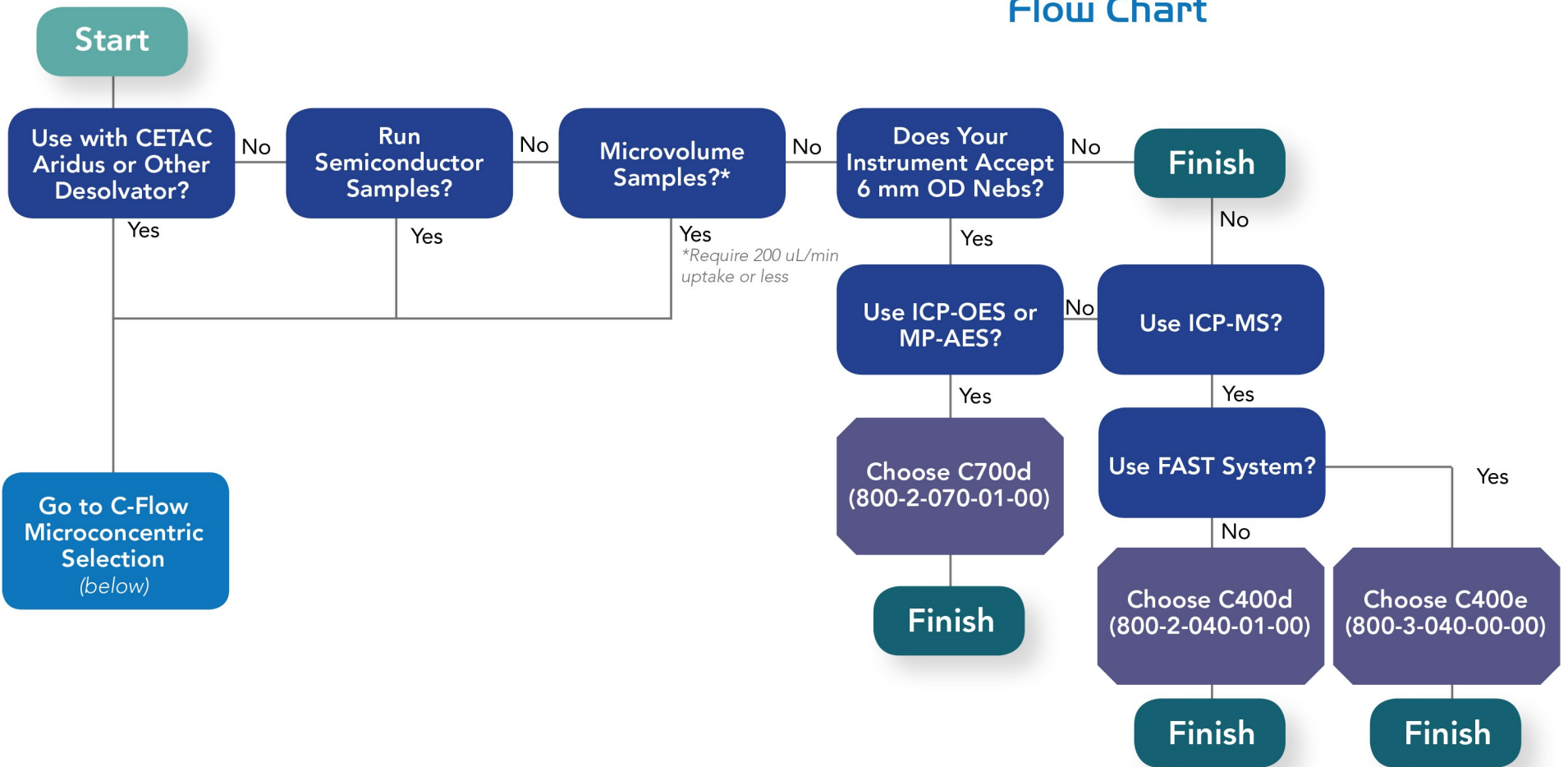
## Flow Chart



**SPECTRON** INC  
www.SpectronUS.com  
Authorized Dealer

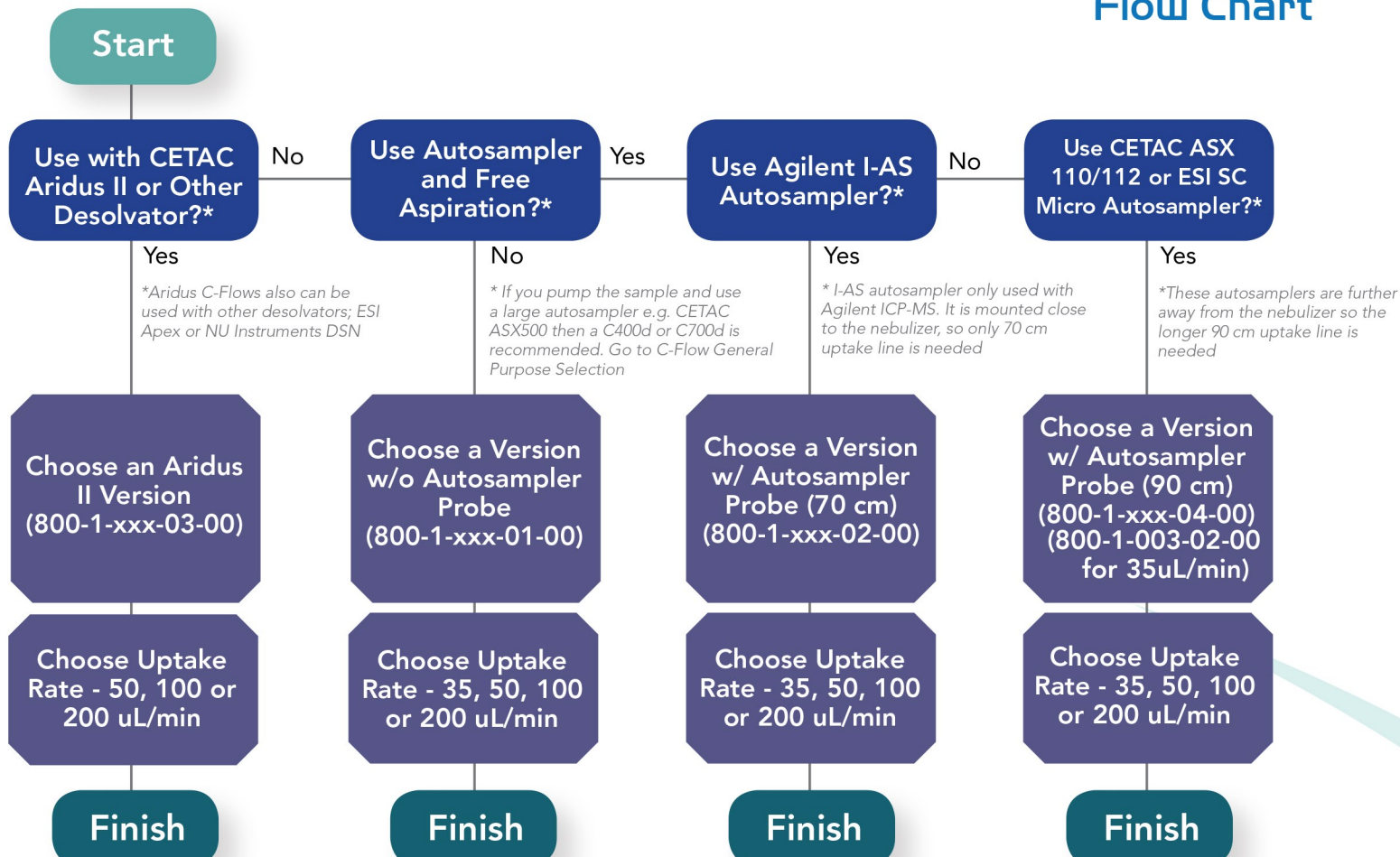
# C-Flow (General Purpose) Selection

## Flow Chart



# C-Flow (Microconcentric) Selection

## Flow Chart



Note: Aridus II C-Flows are assembled at 110 degrees C. They can not be used for normal room temperature applications (i.e. non-desolvator)

Note: The 90 cm C-Flows have a slightly thicker probe to fit ESI autosamplers but can also be used with CETAC ASX 110/112 or Agilent I-AS